

ELECTRICAL PRODUCTS CATALOG

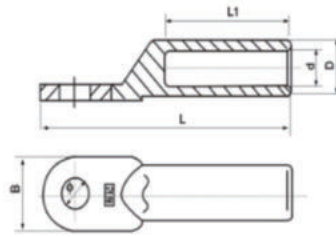


DT Terminal Cable Lug

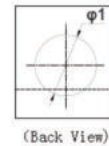
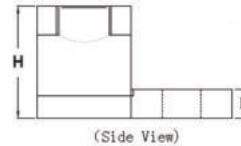
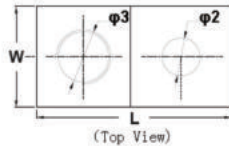
DT Terminales

Material: Copper

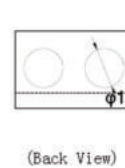
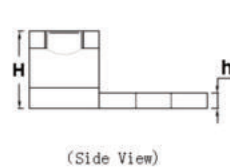
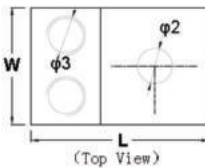
Application: Suitable for power distribution equipment, electrical equipment power wire connection.



CAT#	Trade Size	Dimension (mm)					
		Ø	D	d	L	L1	B
HDT010	10mm ²	8.5	9	5.3	62.0	28	16
HDT016	16mm ²	8.5	10	6.5	66.0	30	16
HDT025	25mm ²	8.5	11	7.0	70.0	33	18
HDT035	35mm ²	10.5	12	8.5	75.6	36	20
HDT050	50mm ²	10.5	14	9.5	85.0	38	23
HDT070	70mm ²	12.5	16	11.5	93.0	43	26
HDT095	95mm ²	12.5	18	13.5	102.0	46	28
HDT120	120mm ²	14.5	20	15.0	110.4	49	30
HDT150	150mm ²	14.5	22	16.5	117.2	51	34
HDT185	185mm ²	16.5	25	18.5	124.0	55	37
HDT240	240mm ²	16.5	27	21.0	135.0	60	40
HDT300	300mm ²	21	31	23.5	150.0	66	50
HDT400	400mm ²	21	34	26.5	158.0	75	50
HDT500	500mm ²	21	38	29.0	166.0	75	60
HDT630	630mm ²	21	45	35.0	203.0	85	80
HDT800	800mm ²	21	50	38.0	255.0	85	100



CAT#	Dimension (mm)						φ3
	L	W	H	h	φ1	φ2	
HTA250	50.8	25.4	28.6	6.4	16.0	8.3	5/8"
HTA350	57	28.5	31.8	6.4	21.0	10.3	13/16"
HTA600	81	38.1	39.7	11.1	24.0	10.3	15/16"
HTA800	85.7	44.5	49.2	12.7	27.0	16.7	15/16"



CAT#	Dimension (mm)						φ3
	L	W	H	h	φ1	φ2	
HAU2/0	37.3	31.8	20.2	4.8	11.0	6.7	7/16"
HAU250	65.1	42.1	30.2	6.4	16.0	9.9	5/8"
HAU350	73	48	31.8	6.4	16.0	14.3	5/8"
HAU600	81	61.1	39.7	11.1	24.0	13.5	15/16"

Copper Coated Steel Grounding Rod

CAT#		Description	
Pointed Non-Threaded	Double Ends Threaded	O.D.	Length
ER030812	ERT030812	3/8"	1200mm
ER030824	ERT030824	3/8"	2400mm
ER010224	ERT010224	1/2"	2400mm
ER010230	ERT010230	1/2"	3000mm
ER050818	ERT050818	5/8"	1800mm
ER050830	ERT050830	5/8"	3000mm
ER030418	ERT030418	3/4"	1800mm
ER030430	ERT030430	3/4"	3000mm

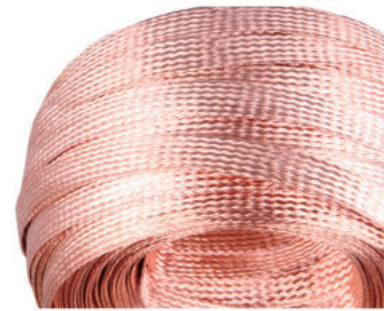
Pure Copper and Stainless Steel Grounding Rod Available.



Copper Braid Wire Conductor

CAT#	Cross Section	Size	Length
GC-CB01	75 mm ²	25*3mm	100M/Roll

Tinned Copper Available.



A Type Brass Clamps

CAT#	Rod Dia. (mm)
GC-A01	11
GC-A02	14
GC-A03	16
GC-A05	18
GC-A06	15
GC-A07	20
GC-A08	25
GC-A09	27



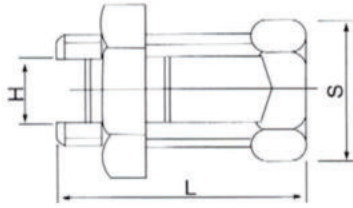
C Type Brass Clamps for Solid & Cable

CAT#	Conductor Size
CCT-16	11.5-16mm ²
CCT-20	14-20mm ²
CCT-26	21-26mm ²
CCT-44	27-44mm ²
CCT-60	45-60mm ²
CCT-76	61-76mm ²
CCT-98	77-98mm ²
CCT-122	99-122mm ²
CCT-154	123-154mm ²
CCT-190	155-190mm ²
CCT-240	191-240mm ²
CCT-288	241-288mm ²
CCT-365	289-365mm ²
CCT-450	366-450mm ²

Tin Plated Type Available



Brass Split Bolt Connector



CAT#	Conductor	Dimension (mm)		
	mm ²	L	H	S
SBC01	10	25	3	10
SBC02	16	27	5	12
SBC03	25	27	7	14
SBC04	35	35	9	18
SBC05	50-70	41	12	24
SBC06	90-120	44	14	25
SBC07	150-185	55	18	30
SBC08	200-240	57	19	32

Customized Type with Tail Bolt Available

Conductors Contact Clip & Clamp

CAT#	Description
GC-T01	For 25*3mm Tape Conductor Bonding
GC-T03	For 25*3mm Tape Conductor Bonding
GC-T04	For 25*3mm Tape Conductor Bonding
GC-W03	For 16-120mm ² Round Conductor Cross Bonding
GC-T09	For 16-120mm ² Round Conductor with 25*3mm Tape



U-Type Clamp & Mounting Bracket

CAT#	Description
GC-U01	For Φ20-30mm Round Conductor with 25*3mm Tape
GC-U03	For Φ20-30mm Round Conductor with 25*3mm Tape
GC-U04	For Φ15-20mm Round Conductor with 35-70mm ² Wire
GC-U06	For Φ20-30mm Round Conductor with 70-120mm ² Wire
GC-U10	For Φ15-25mm Round Conductor with 20*3mm Tape



Authorized distributor



汉纳森电气
HANYSEN
PERFECT ELECTRICAL SOLUTION

Tel/Fax:+86 571 82675286

Cell/Wechat:+86 18058129110

Rm1405, Office Building B, Henglong Square,
Xiaoshan District, Hangzhou, Zhejiang, China

info@hanysen.net benson@hanysen.net